



STEPHENSON BROWNE

**Norbreck Avenue, Crewe**

CW2 7NW



**Offers Over £365,000**

## Description

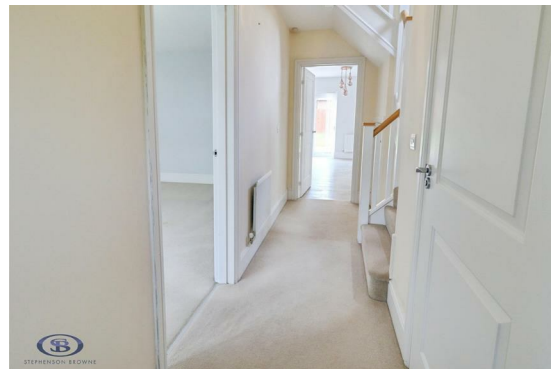
Stephenson Browne are pleased to present to the market this attractive four-bedroom detached property, offered for sale with no onward chain, located on the sought-after Norbreck Avenue offering spacious and flexible accommodation perfectly suited to family living.

The property opens into a welcoming and well-proportioned lounge situated at the front of the home, creating a comfortable space to relax. To the rear, there is a spacious kitchen diner fitted with ample storage and worktop space, alongside plenty of room for dining and entertaining, making it an ideal setting for both everyday living and social occasions. The ground floor also benefits from a convenient downstairs W.C.

To the first floor, the property comprises four well-sized bedrooms, including two generous double rooms. One of the double bedrooms enjoys the added benefit of an ensuite shower room, while a family bathroom serves the remaining accommodation.

Externally, the home benefits from a driveway providing off-road parking for two vehicles, in addition to a detached garage offering useful storage or secure parking. The rear garden is well maintained and features a patio seating area alongside a lawned garden, ideal for relaxing and outdoor entertaining.

An early viewing is highly recommended to appreciate all that this spacious family home has to offer.





## Viewing

Please contact our office using the details provided on the final page if you are interested in booking a viewing or require further information.



STEPHENSON BROWNE



